

Élan Cité

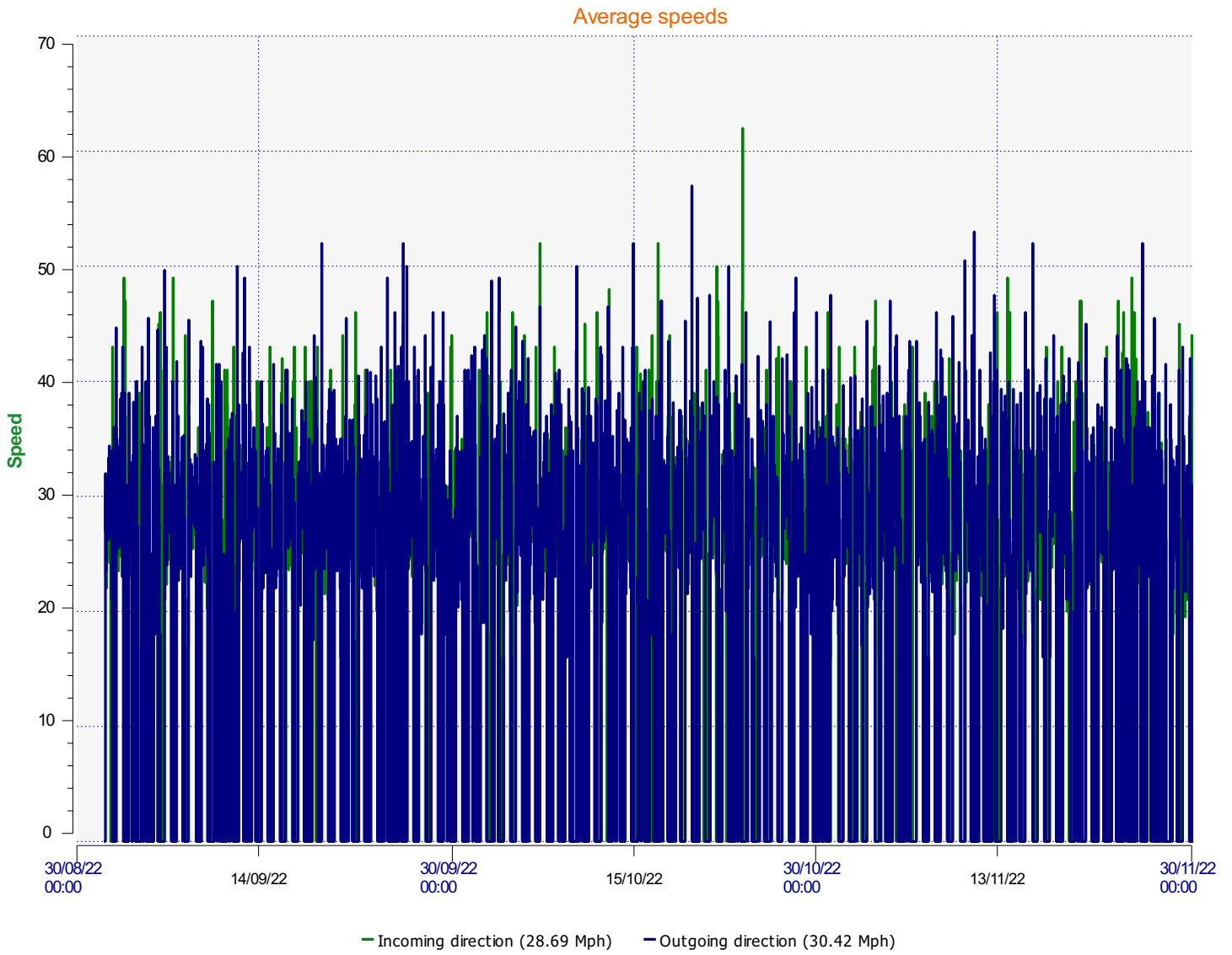


DÉTECTER • INFORMER • SÉCURISER

Start date: Thursday, September 1, 2022 8:00 AM
End date: Thursday, December 1, 2022 12:00 PM

Location:

Comments:

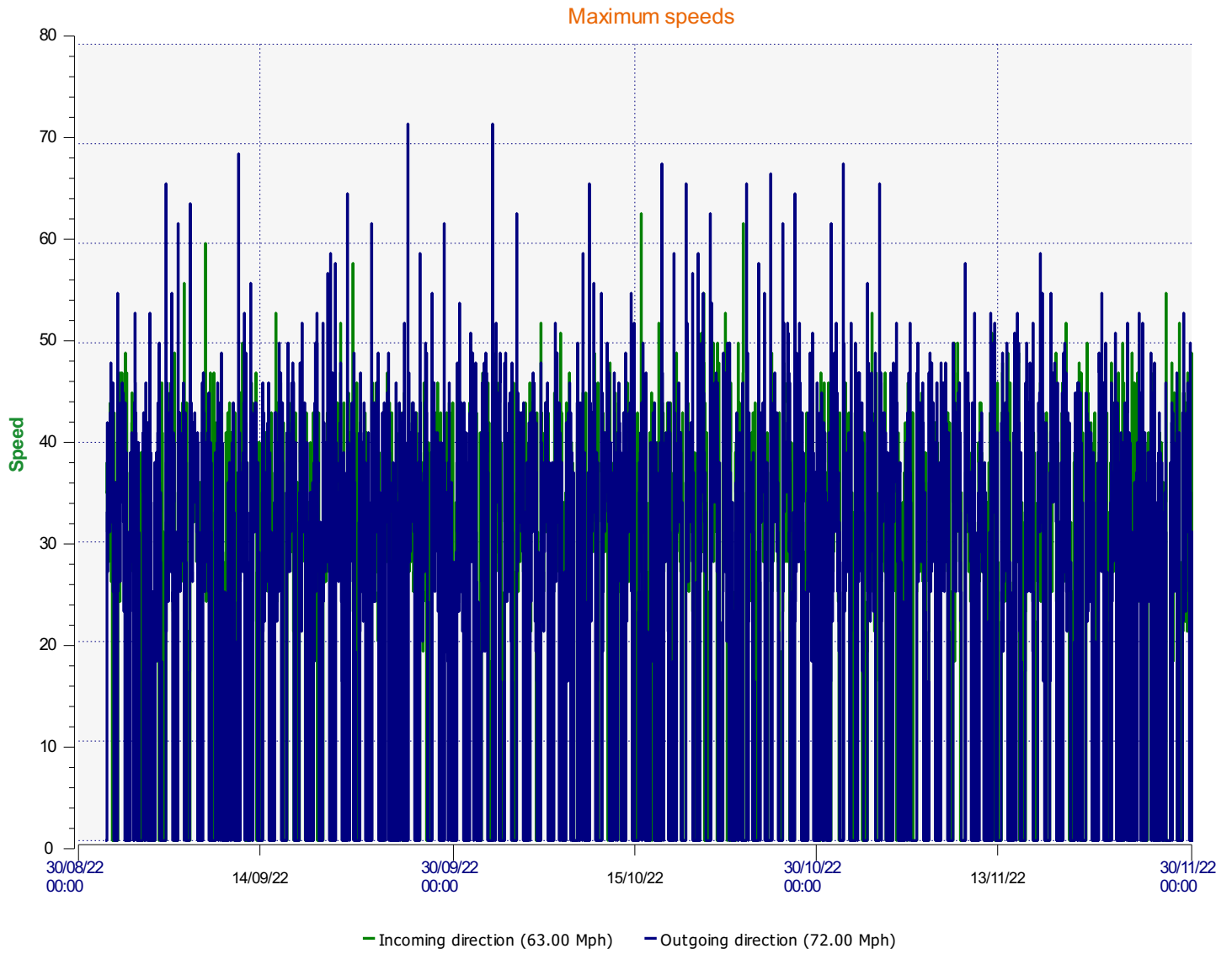


Start date: Thursday, September 1, 2022 8:00 AM

End date: Thursday, December 1, 2022 12:00 PM

Location:

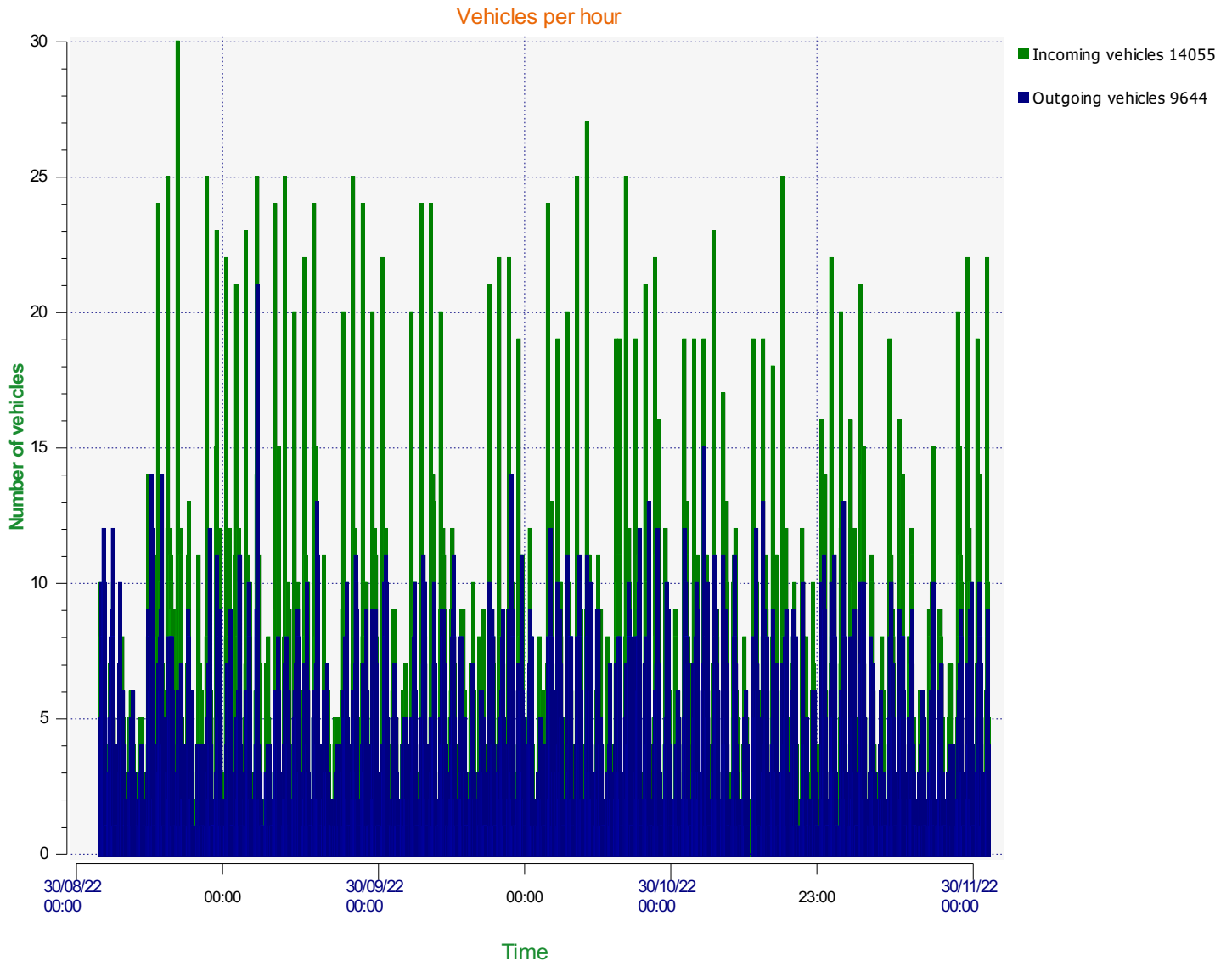
Comments:



Start date: Thursday, September 1, 2022 8:00 AM
End date: Thursday, December 1, 2022 12:00 PM

Location:

Comments:

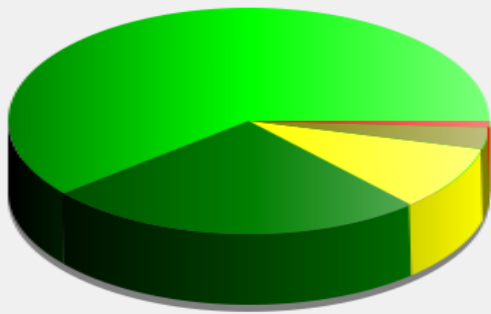


Start date: Thursday, September 1, 2022 8:00 AM
End date: Thursday, December 1, 2022 12:00 PM

Location:

Comments:

Incoming vehicles



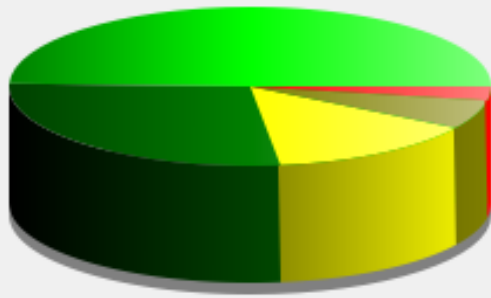
■	<= 30 Mph : 8,581 - (61.05 %)
■	31 - 35 Mph : 3,610 - (25.68 %)
■	36 - 40 Mph : 1,300 - (9.25 %)
■	41 - 45 Mph : 439 - (3.12 %)
■	46 - 65 Mph (et +) : 125 - (0.89 %)






Start date: Thursday, September 1, 2022 8:00 AM
End date: Thursday, December 1, 2022 12:00 PM

Location:

Comments:

Outgoing vehicles



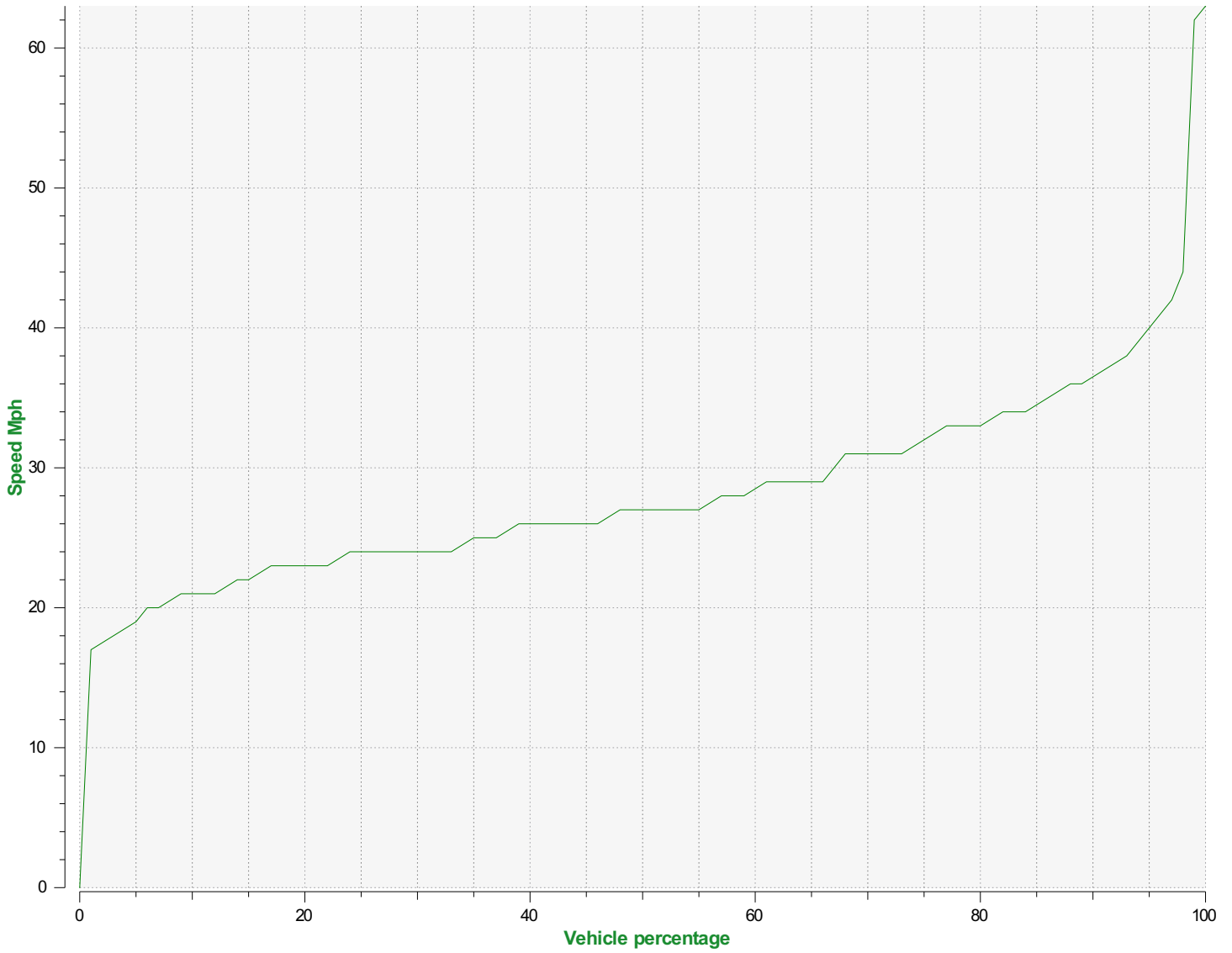
	<= 30 Mph : 4,770 - (49.46 %)
	31 - 35 Mph : 2,657 - (27.55 %)
	36 - 40 Mph : 1,376 - (14.27 %)
	41 - 45 Mph : 566 - (5.87 %)
	46 - 65 Mph (et +) : 275 - (2.85 %)

Start date: Thursday, September 1, 2022 8:00 AM

End date: Thursday, December 1, 2022 12:00 PM

Location:

Comments:



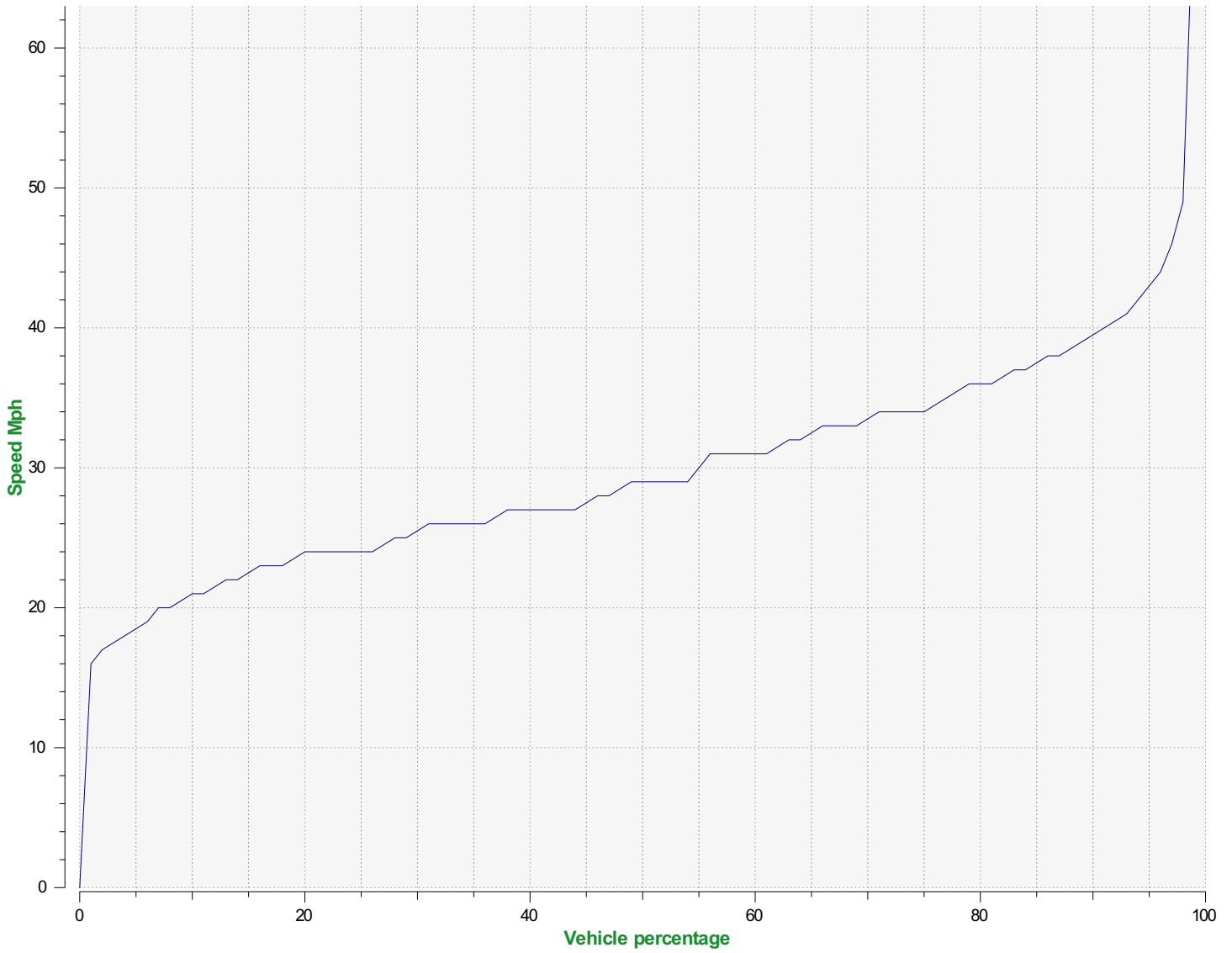
Speed percentiles (incoming)

V30: 24.00Mph **V50:** 27.00Mph **V85:** 34.00Mph

Start date: Thursday, September 1, 2022 8:00 AM
End date: Thursday, December 1, 2022 12:00 PM

Location:

Comments:



Speed percentile(outgoing)

V30: 25.00Mph **V50:** 29.00Mph **V85:** 37.00Mph

Start date: Thursday, September 1, 2022 8:00 AM
End date: Thursday, December 1, 2022 12:00 PM

Location:

Comments: