

Élan Cité

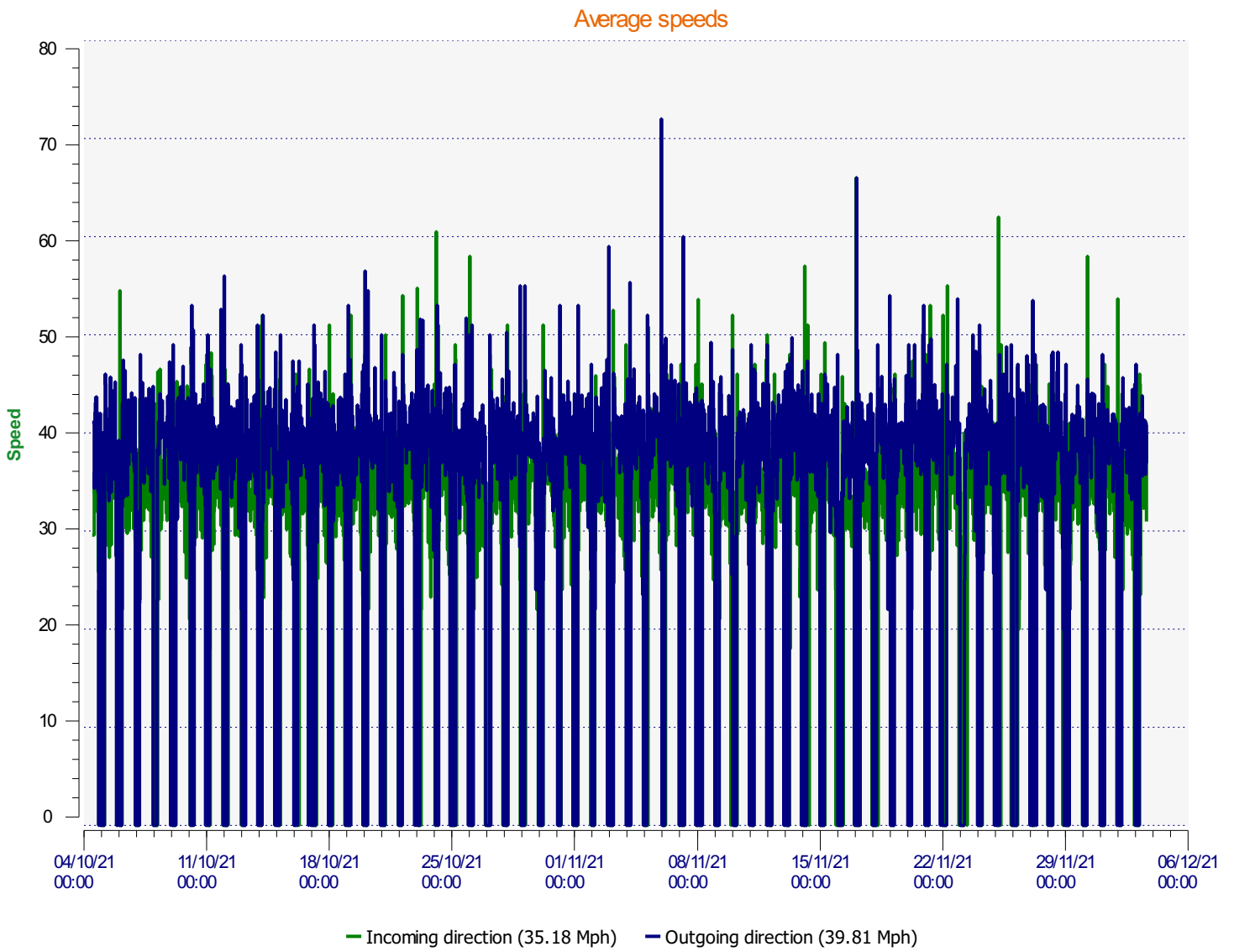


DÉTECTER • INFORMER • SÉCURISER

Start date: Monday, October 4, 2021 1:30 PM
End date: Friday, December 3, 2021 3:00 PM

Location:

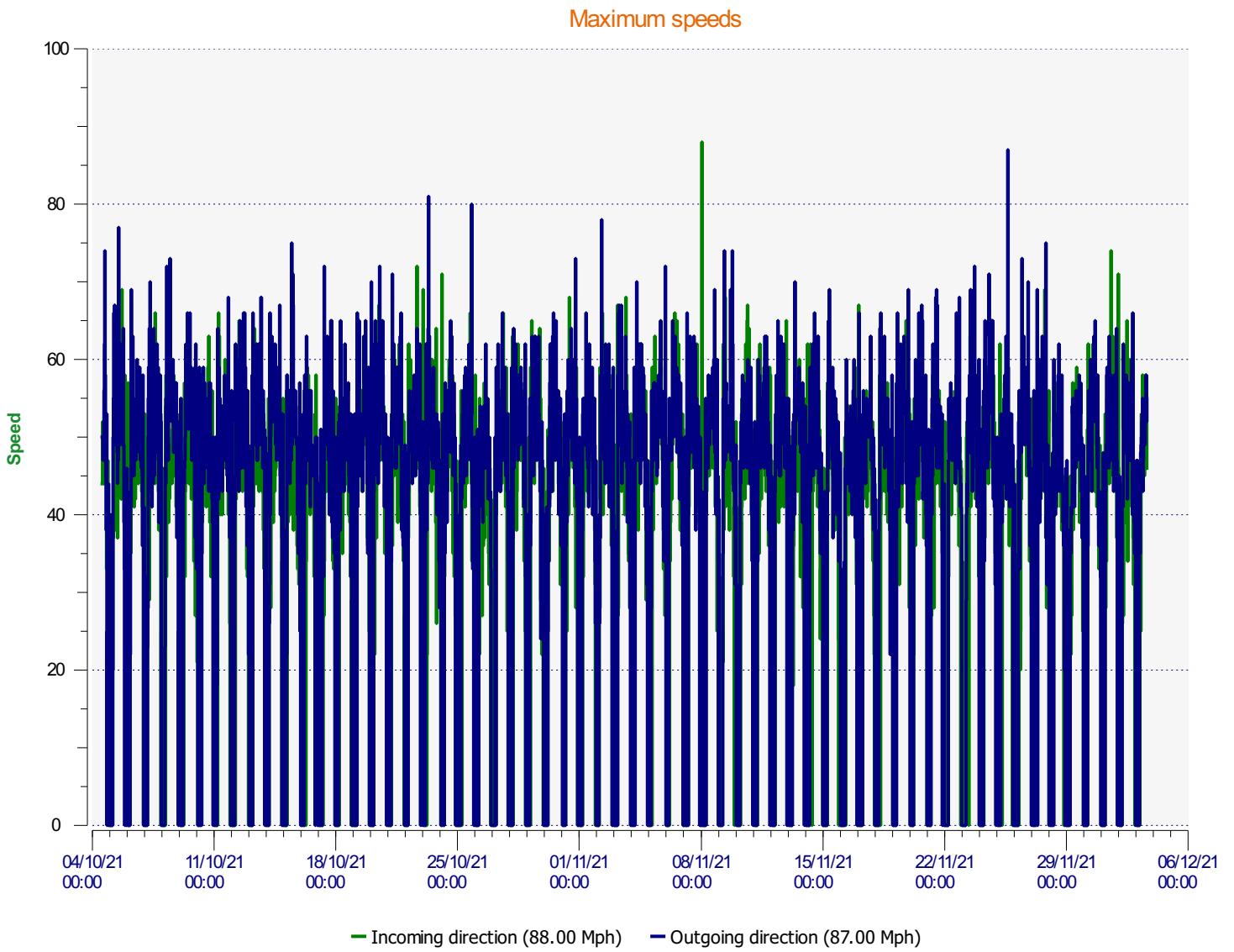
Comments:



Start date: Monday, October 4, 2021 1:30 PM
End date: Friday, December 3, 2021 3:00 PM

Location:

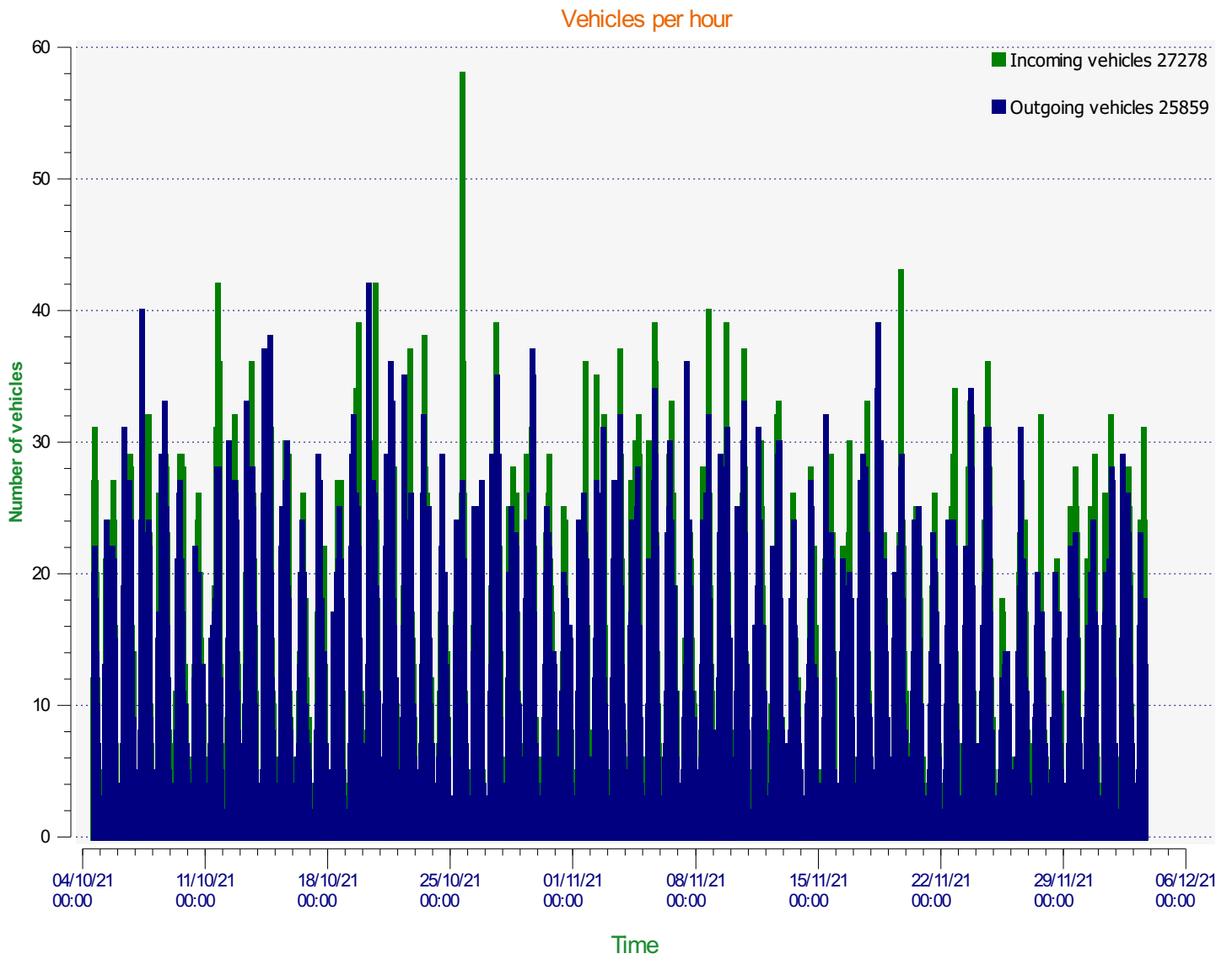
Comments:



Start date: Monday, October 4, 2021 1:30 PM
End date: Friday, December 3, 2021 3:00 PM

Location:

Comments:

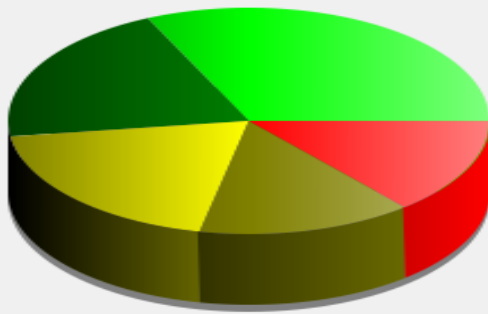


Start date: Monday, October 4, 2021 1:30 PM
End date: Friday, December 3, 2021 3:00 PM

Location:

Comments:

Incoming vehicles



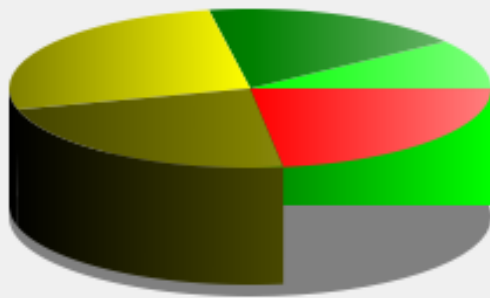
- <= 30 Mph : 8,704 - (31.91 %)
- 31 - 35 Mph : 5,538 - (20.30 %)
- 36 - 40 Mph : 5,324 - (19.52 %)
- 41 - 45 Mph : 3,949 - (14.48 %)
- 46 - 65 Mph (et +) : 3,763 - (13.80 %)

Start date: Monday, October 4, 2021 1:30 PM
End date: Friday, December 3, 2021 3:00 PM

Location:

Comments:

Outgoing vehicles

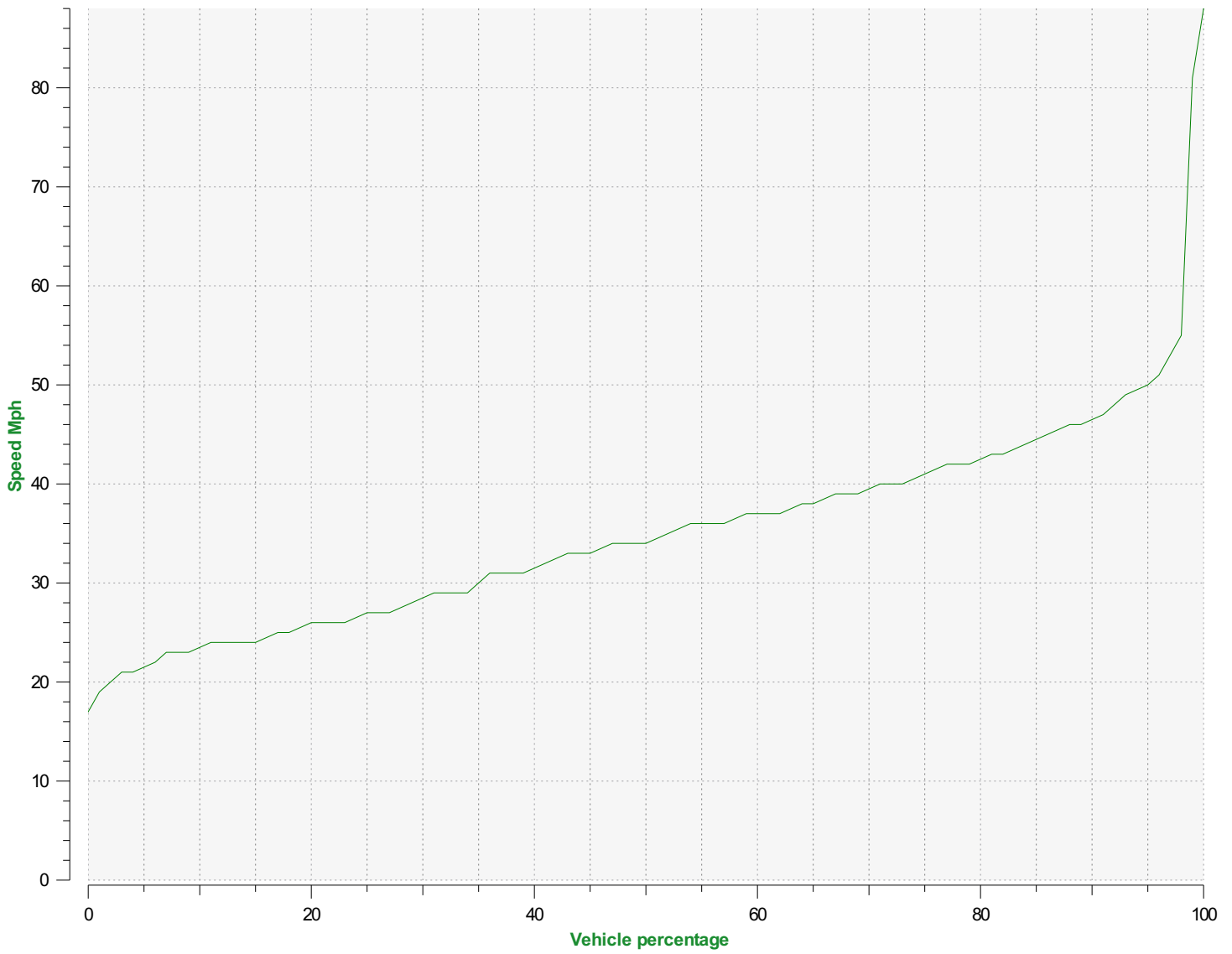


- <= 30 Mph : 2,599 - (10.05 %)
- 31 - 35 Mph : 4,577 - (17.70 %)
- 36 - 40 Mph : 6,859 - (26.52 %)
- 41 - 45 Mph : 5,925 - (22.91 %)
- 46 - 65 Mph (et +) : 5,899 - (22.81 %)

Start date: Monday, October 4, 2021 1:30 PM
End date: Friday, December 3, 2021 3:00 PM

Location:

Comments:



Speed percentiles (incoming)

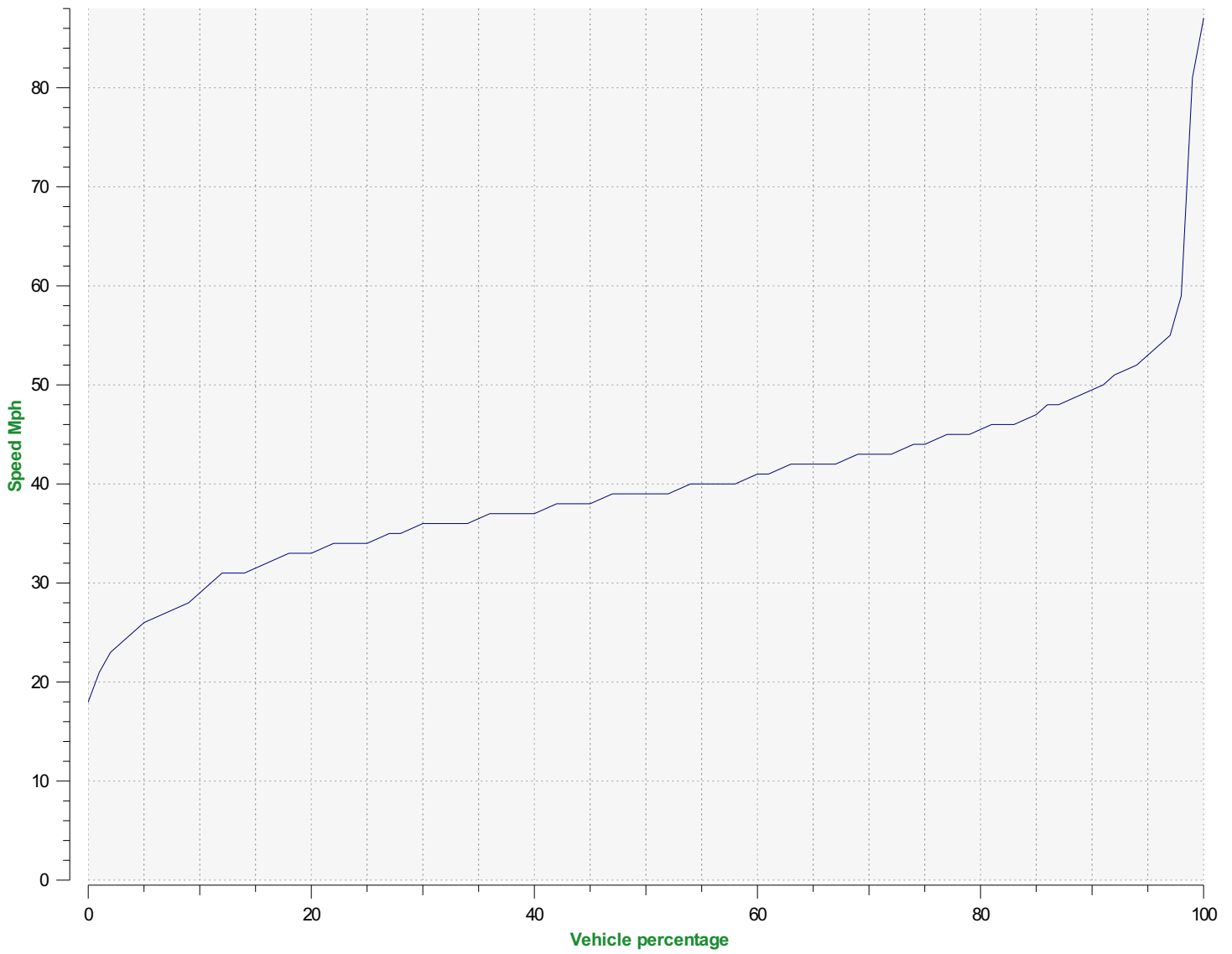
V30: 28.00Mph **V50:** 34.00Mph **V85:** 44.00Mph

Start date: Monday, October 4, 2021 1:30 PM

End date: Friday, December 3, 2021 3:00 PM

Location:

Comments:



Speed percentile(outgoing)

V30: 36.00Mph **V50:** 39.00Mph **V85:** 47.00Mph

Start date: Monday, October 4, 2021 1:30 PM
End date: Friday, December 3, 2021 3:00 PM

Location:

Comments: